



Micro-processor operated Temperature Controller

The micro-processor operated device ELTC-40 is used for temperature control and has an output for a temperature sensor Pt 100. The controller is suited for 230 V or 12-24 V AC / 16-36 VDC power supply and features one output relay. The relay mode is indicated via LED. The controller has a 3-digit red illuminating display. The set values and other parameters can be programmed via keypad with three keys to different functions.

Advantages:

- Temperature display
- Optional configuration
- High control accuracy

Applications:

- Industrial applications
- Mechanical, electrical and plumbing (MEP)
- Heat tracing on pipes, valves and vessels
- Tank containers



Type **ELTC 40/1, 40/5, 40/1.1, 40/5.1**





Technical details

Data

■ Hysteresis	0,5 K +/- 0,5 % of temperature range
■ Outputs	K1: relay, 16(4)A-contact, 250 V, max. continuous current 12 A, closing contact
■ Inputs	E1: entry for external potential-free switch
■ Operating voltage	230 V / 12-24 V AC, 16-36 V DC, 50/60 Hz, -15/+10%, Power consumption max. 4 VA
■ IP rating	IP 65 front
■ Ambient temp.	0 °C up to +55 °C
■ Connections	12-pole terminal screw matrix 5,0 mm, for cable up to 2.5 mm ²

Features

■ Display	3-digit LED-display, 13 mm high, for indication of temperature, color red three LED lamps, diameter 3 mm for status display LED1: status output K1 LED2: optional configuration LED3: status alarm with ELTC 40.5
■ Dimensions	designed for integration into the control panel, Front size 84 x 42 mm Control panel cut-out 68 x 32 mm Mounting depth, approximately 85 mm Fastening through bolted-on fixing bow
■ Weight	140 g

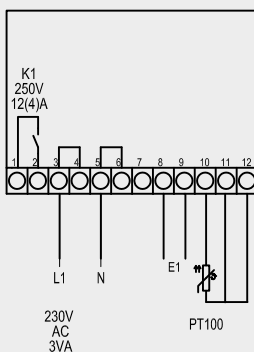
Type ELTC 40/1, 40/5, 40/1.1, 40/5.1

Type	Operating voltage	Item n°
ELTC 40/1	230 V	0621140
ELTC 40/5	230 V	0621141
ELTC 40/1.1	12-24 V AC, 12-24 V DC	0621142
ELTC 40/5.1	12-24 V AC, 12-24 V DC	0621143

Wiring diagram

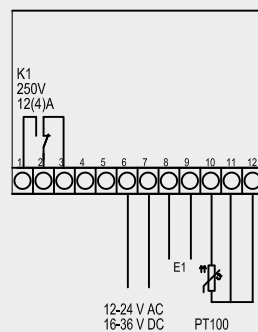
terminal assignment

ELTC 40/1



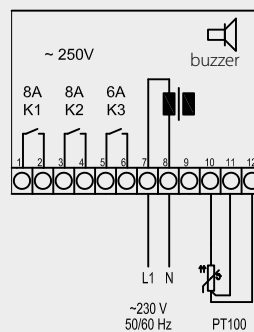
terminal assignment

ELTC 40/1.1



terminal assignment

ELTC 40/5



terminal assignment

ELTC 40/5.1

